

true digital



User Manual Smart Light Bulb

Setting LivingTECH APP
Step 1: Scan the QR code or search "LivingTECH" on App store or Google Play to download and install the LivingTECH App for iOS /Android.

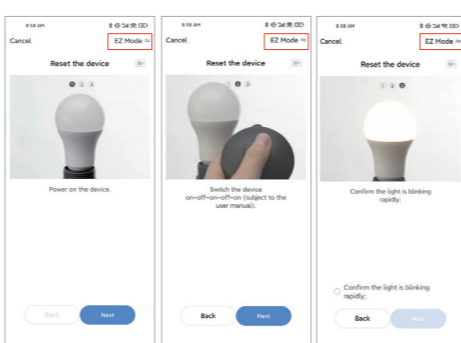


Step 2: Launch the "LivingTECH" App, the App will ask you to register your device. Enter your phone number or email and select the country you live in.

Step 3: After inputting phone number, you will receive a text with a registration code. And if you choose email you will be asked to create a password. Input the Registration Code you received or create password if email method chosen.

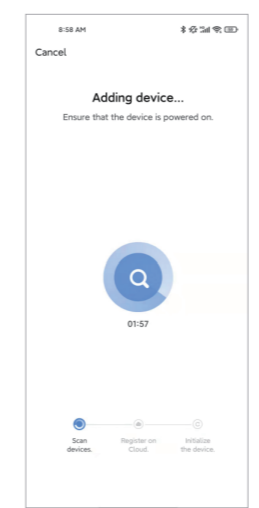
01

Quick mode Configuration (EZ mode)
1. Before connecting, please make sure your smart phone or device is connecting with your home Wi-Fi successfully.
2. To connect in EZ, the light needs to be set to flash rapidly. (You can learn the detailed instruction on How To Make Light Blinks Rapidly from inner page of LivingTECH APP)



02

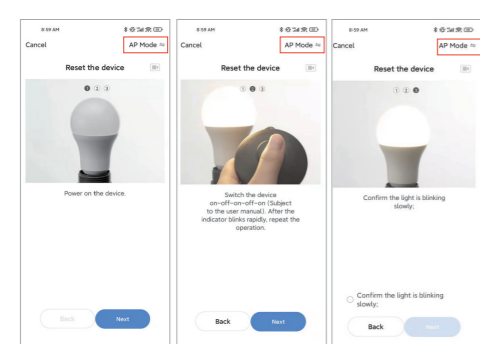
3. Open App and click "+" to add device.
4. Follow the in-app instructions to connect the Smart Light Bulb to your Wi-Fi network. (2.4 GHz).
5. Once connected, the App will prompt the connection, then click "Done".



6. Now you can control the smart bulb through LivingTECH App.

03

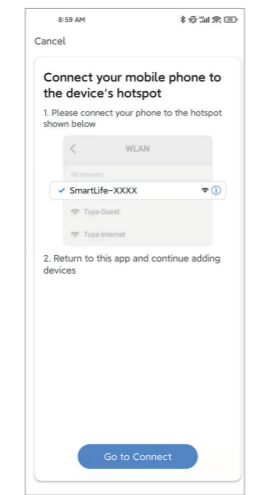
AP mode Configuration
1. Before connecting, please make sure your smart phone or device is connecting with your home Wi-Fi (2.4GHz)
2. Make sure AP mode configuration is initiated: power on the light and confirm that light blinks slowly.



(How to make light slowly blink, please check the inner-app instruction)

04

3. Click the icon "+" at the top right corner of the App.
4. Select device type and click AP mode to Add device.
5. Go to Wi-Fi setting in your smart phone and select the "Smart Life-XXX" for your Wi-Fi.



6. Once connected successfully, the App will prompt the connection, and click "Done".

05

Warm Tips
Please check whether the device is connected with power and your phone is connected with Wi-Fi.
Check routers: If the router is dual-band router, please select a 2.4GHz network to add device. You also need to open the router broadcasting function.
Set up the wireless router: Set encryption method as WPA2-PSK authorization type as AES, or set both as auto. The Wireless mode cannot be only SGHz. Please name router Wi-Fi in English. In order to stay strong Wi-Fi signal, please keep device and router within a certain distance.
Check whether connected devices have reached the Maximum number router connection. If so, please try to turn off the Wi-Fi connection of some devices.
Make sure router wireless MAC filtering function is enabled.
Remove the device from the filter list and make sure that router is not prohibiting device from connection.
Make sure the entered password is correct when adding a new device.

FCC ID Statement

This device complies with Part 15 of the FCC Rules. Operation is subject to the following two conditions:
(1) this device may not cause harmful interference.
(2) this device must accept any interference received, including interference that may cause undesired operation.

Please note that changes or modifications of this product is not expressly approved by the party responsible for compliance could void the user's authority to operate the equipment.

NOTE: This equipment has been tested and found to comply with the limits for a Class B digital device, pursuant to Part 15 of the FCC Rules. These limits are designed to provide reasonable protection against harmful interference in a residential installation.

06

This equipment generates, uses and can radiate radio frequency energy and, if not installed and used in accordance with the instructions, may cause harmful interference to radio communications.

However, there is no guarantee that interference will not occur in a particular installation. If this equipment does cause harmful interference to radio or television reception, which can be determined by turning the equipment off and on, the user is encouraged to try to correct the interference by one or more of the following measures:
- Reorient or relocate the receiving antenna.
- Increase the separation between the equipment and receiver.
- Connect the equipment into an outlet on a circuit different from that to which the receiver is connected.
- Consult the dealer or an experienced radio/TV technician for help.

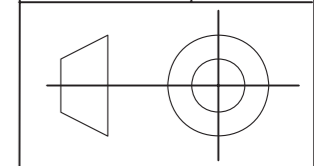
Warranty

The product carries a one-year warranty from purchase date. Please feel free to contact us when you have any product problem or suggestions. We take care of all quality-related issues with a REPLACEMENT OR FULL REFUND.

07

UNTOLERANCE DIMENSIONS

Table with 2 columns: Dimension range and Tolerance. Values include <=20, >20<60, >=60 and tolerances like +/-0.10, +/-0.15, +/-0.20.



280*104mm/成型后尺寸70*104mm/157g铜版纸/四色/正反双面打印/4折页/供应商折页/手风琴式折页

与客户包装信息一致

Table with 4 columns: Version, DCN NO, Modification Description, Revision Date. Includes '未做特殊说明' and '单位为毫米 (mm)'.



Table with 3 columns: Drawing Name, Drawing Number, Issue Date, Page Number. Includes '说明书_LED_S125_G2_RGBCW_A60_230-9W_27-65K_E27白_001_V01'.

未经公司允许, 该文档和数据不得全部或部分复制